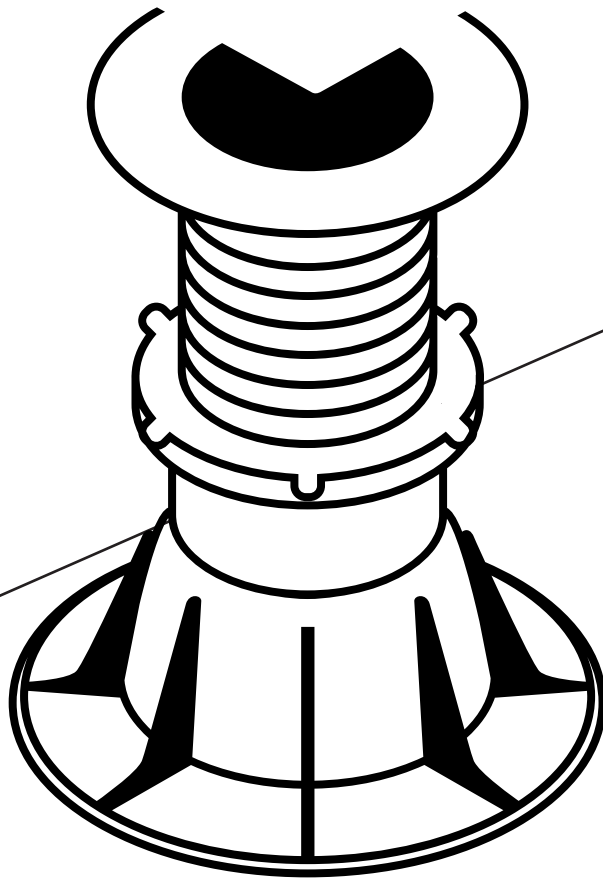




system
PLOTS

PLOTS FOR RAISED FLOORS



APPLICATIONS

Covers in flat roofs.

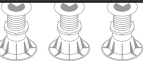
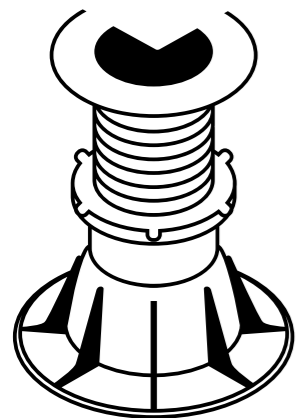
Canopies, stands, etc.

Pool edges and planking.

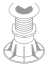
Covered pedestrian passages and gardens

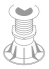
Raised, floating and technical floors.

Illuminated floors.

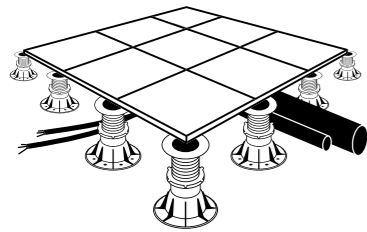


ADVENTAGES

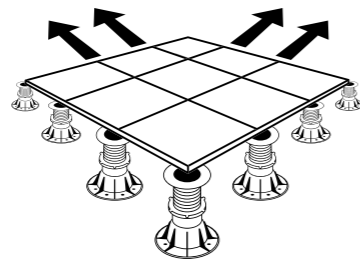
 Cifre Ceramica plots for external use are a solution for projects in which floating, technical, raised or registrable floors are needed.

 The only alternative to traditional construction methods in this type of projects in order to reduce weight and avoid architectural barriers.

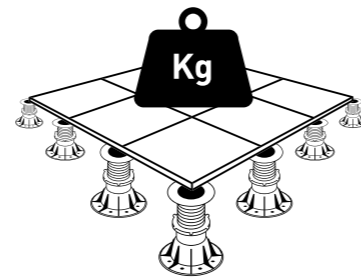
 Allow for high quality finish saving work and making further maintenance easier.



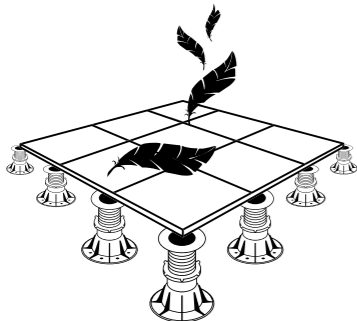
1 Easy installation of pipes and wires.



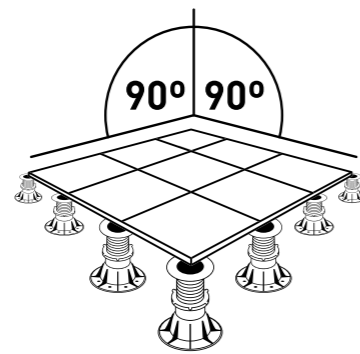
2 Acts as an expansion joint.



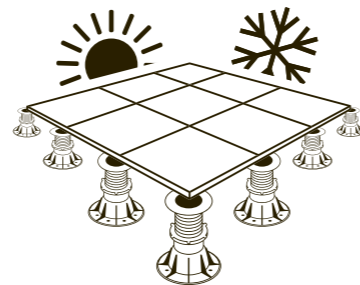
3 Passable pavement resistant to passing.



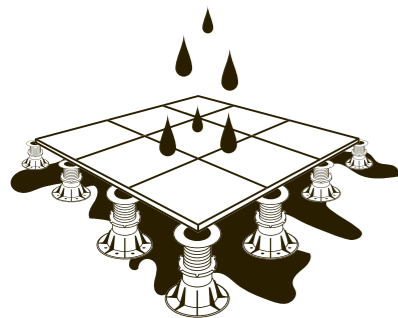
4 Light covers.



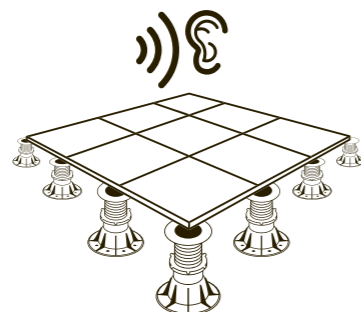
5 Complete flatness of the floor.



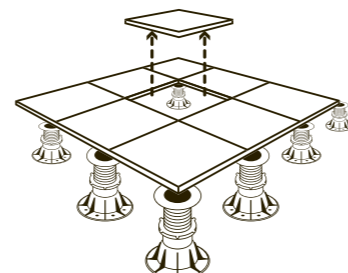
6 Optimal thermal insulation.



7 Perfect water disposal.

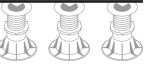


8 Greater acoustic insulation.



9 Entirely registrable raised floor.

PIECES

**1 | Pad**

Pad made of an elastomer material which offers noise and slipping resistance.

2 | Head

Head may of polypropylene with charges. Provided with 4 mm spacers. The thread offers resistance over 1,500 kg.

3 | Locknut

The locknut blocks the plot to avoid being loosened over time.

4 | Floating nut

The floating nut allows the adjustable plot to be lifted or lowered without raising the tile. The nut is subject to pressure avoiding the plot from being disassembled.

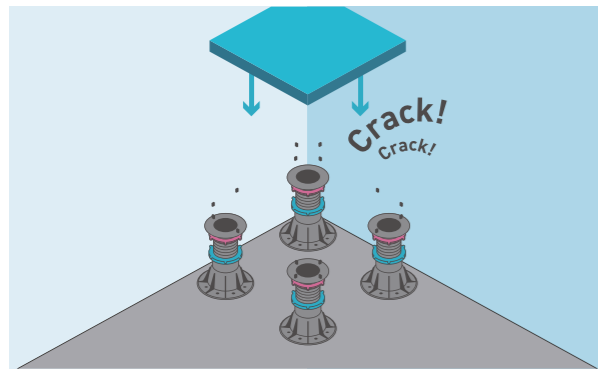
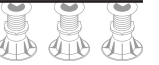
5 | Bushing

Wedge-base to raise the adjustable plot to 90mm. Can be coupled and lifted until the height wanted.

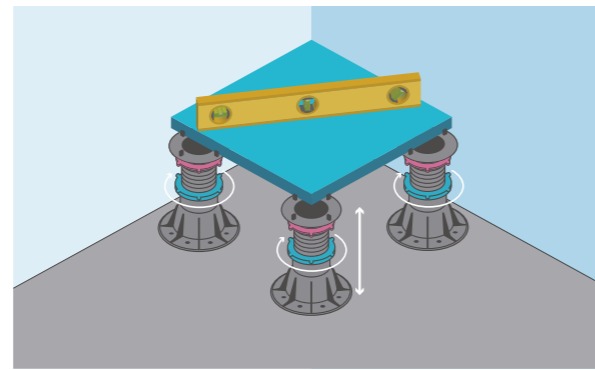
6 | Base

Adjustable plot. Water outlets to prevent from water accumulation in it. The holes on the base facilitate its fixing to the floor with polyurethane if necessary.

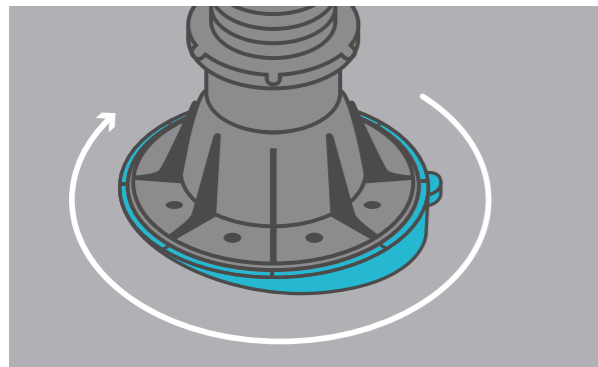
HOW TO USE

**1º Place first plots**

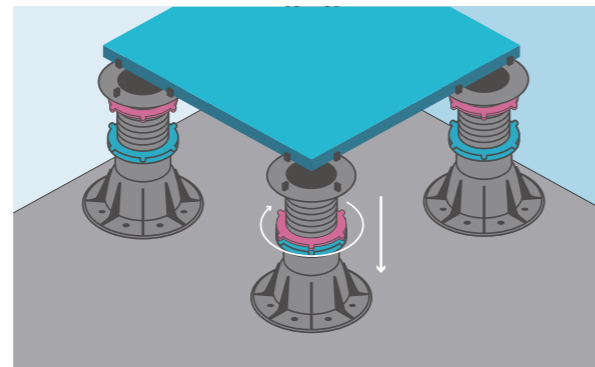
Place 4 plots adjusted to the tile width. Start by a corner of the perimeter to install. Break the plot flanges that hamper the appropriate tile installation.

**2º Level the tile**

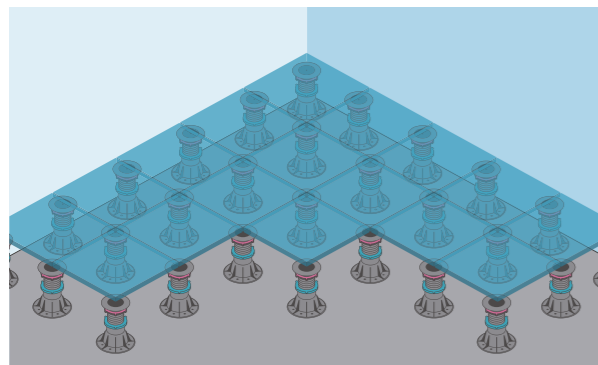
Use a leveller to check the appropriate levelling of the tile on the plots. Adjust the plots with the floating nut until reaching the wanted height and complete levelling.

**3º Compensate unevenness with a complement**

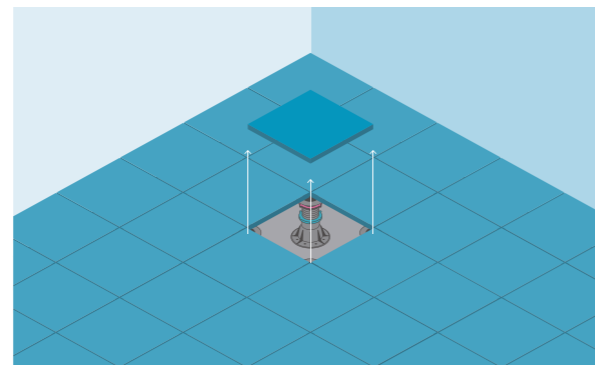
To obtain a completely levelled surface you can use a slope regulator to compensate the floor unevenness.

**4º Fix the plot**

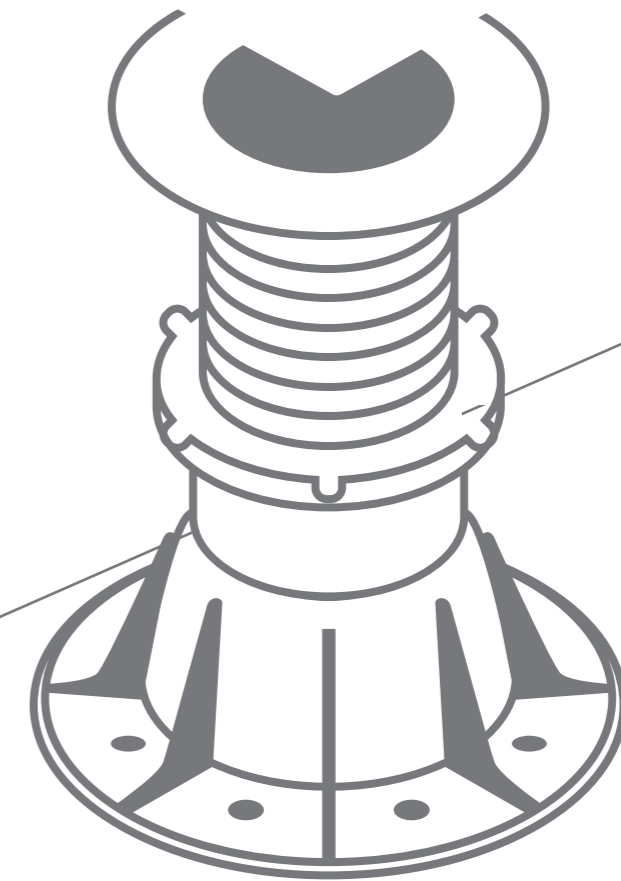
Tighten the locknut for fixing the plot completely and avoid movements. We recommend fixing the base with polyurethane foam or similar. In this way, unwanted movements are avoided. We also recommend using the pad to damper sound.

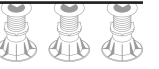
**5º Continue with the adjacent tiles**

Continue laying the tiles with the same procedure.

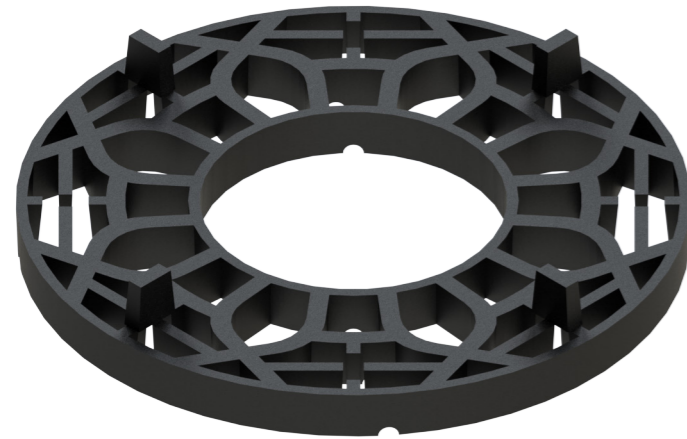
**6º Registrable floor**

Finally, we obtain a completely registrable surface which allows us access to lower installations such as electrical wiring, sump, piping, etc.

**system
PLOTS****DATA SHEET**

**APOYO MODEL 10MM**

SP 2002



PLOT FOR RAISED FLOORS

MODEL : Apoyo MOD. 10 mmEXACT DIMENSIONS

Height : 10 mm
Diameter: 130 mm

TECHNICAL FEATURES

Compressive strength	6000 kg
Thermal stability	-25 / +110 °C
Tile spacing	4 mm
Degree of tilt	0°

COMPOSITION

Base

Polypropylene with load of talcum at 40%

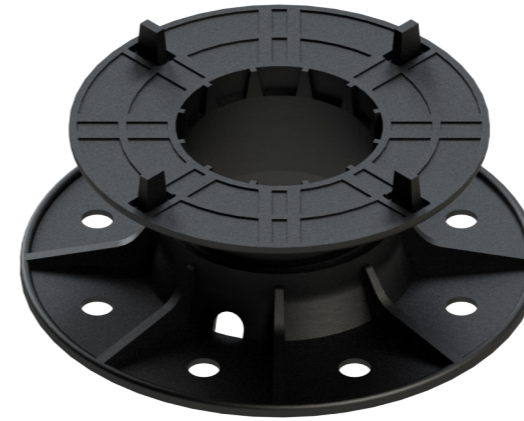
ACCESSORIES

Pad

Wedge (To supplement if necessary)

MODEL SP

SP 2008



PLOT FOR RAISED FLOORS

MODEL : SPEXACT DIMENSIONS

Height Máx : 50 mm Diameter Sup. : 130 mm
Height Min: 37 mm Diameter Inf: 160 mm

TECHNICAL FEATURES

Compressive strength	1300 kg
Thermal stability	-25 / +110 °C
Tile spacing	4 mm
Screw pitch	8 mm
Degree of tilt	0°

COMPOSITION

Polypropylene with load of talcum at 40%

ACCESSORIES

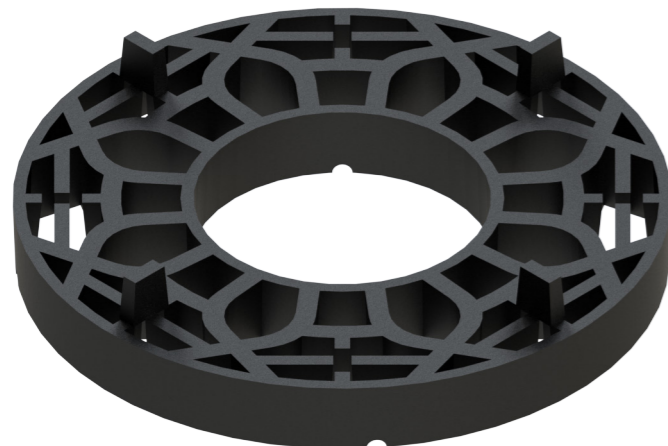
Head without flanges

Pad

Wedge (To supplement if necessary)

APOYO MODEL 15MM

SP 2002



PLOT FOR RAISED FLOORS

MODEL : Apoyo MOD. 15 mmEXACT DIMENSIONS

Height : 15 mm
Diameter: 130 mm

TECHNICAL FEATURES

Compressive strength	6000 kg
Thermal stability	-25 / +110 °C
Tile spacing	4 mm
Degree of tilt	0°

COMPOSITION

Base

Polypropylene with load of talcum at 40%

ACCESSORIES

Pad

Wedge (To supplement if necessary)

MODEL SPO

SP 2009



PLOT FOR RAISED FLOORS

MODEL : SPOEXACT DIMENSIONS

Height Máx : 75 mm Diameter Sup. : 130 mm
Height Min: 50 mm Diameter Inf: 160 mm

TECHNICAL FEATURES

Compressive strength	1300 kg
Thermal stability	-25 / +110 °C
Tile spacing	4 mm
Screw pitch	8 mm
Degree of tilt	0°

COMPOSITION

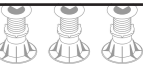
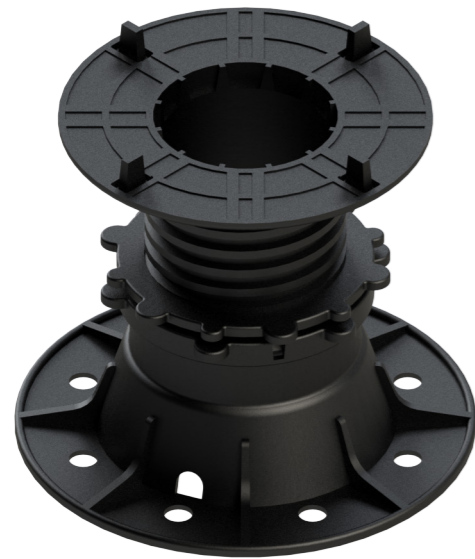
Polypropylene with load of talcum at 40%

ACCESSORIES

Head without flanges

Pad

Wedge (To supplement if necessary)

**MODEL SP1****SP 2012**

PLOT FOR RAISED FLOORS

MODEL : SP1EXACT DIMENSIONS

Height Máx : 130 mm Diameter Sup. : 130 mm
 Height Min: 80 mm Diameter Inf: 160 mm

TECHNICAL FEATURES

Compressive strength	1400 kg
Thermal stability	-25 / +110 °C
Tile spacing	4 mm
Screw pitch	8 mm
Degree of tilt	0° 1° 2°

COMPOSITION

Polypropylene with load of talcum at 40%
 Floating Nut:
 Polyamide loaded with fiber glass at 30%

ACCESSORIES

Head without flanges
 Pad
 Wedge (To supplement if necessary)
 Locknut

MODEL SP3**SP 2018**

PLOT FOR RAISED FLOORS

MODEL : SP3EXACT DIMENSIONS

Height Máx : 310 mm Diameter Sup. : 130 mm
 Height Min: 220 mm Diameter Inf: 160 mm

TECHNICAL FEATURES

Compressive strength	1500 kg
Thermal stability	-25 / +110 °C
Tile spacing	4 mm
Screw pitch	8 mm
Degree of tilt	0° 1° 2°

COMPOSITION

Polypropylene with load of talcum at 40%
 Floating nut:
 Polyamide loaded with fiber glass at 30%

ACCESSORIES

Head without flanges
 Pad
 Wedge (To supplement if necessary)
 Locknut

MODEL SP2**SP 2014**

PLOT FOR RAISED FLOORS

MODEL : SP2EXACT DIMENSIONS

Height Máx : 220 mm Diameter Sup. : 130 mm
 Height Min: 130 mm Diameter Inf: 160 mm

TECHNICAL FEATURES

Compressive strength	1500 kg
Thermal stability	-25 / +110 °C
Tile spacing	4 mm
Screw pitch	8 mm
Degree of tilt	0° 1° 2°

COMPOSITION

Polypropylene with load of talcum at 40%
 Floating nut:
 Polyamide loaded with fiber glass at 30%

ACCESSORIES

Head without flanges
 Pad
 Wedge (To supplement if necessary)
 Locknut

MODEL SP4**SP 2022**

PLOT FOR RAISED FLOORS

MODEL : SP4EXACT DIMENSIONS

Height Máx : 400 mm Diameter Sup. : 130 mm
 Height Min: 310 mm Diameter Inf: 160 mm

TECHNICAL FEATURES

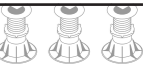
Compressive strength	1500 kg
Thermal stability	-25 / +110 °C
Tile spacing	4 mm
Screw pitch	8 mm
Degree of tilt	0° 1° 2°

COMPOSITION

Polypropylene with load of talcum at 40%
 Floating nut:
 Polyamide loaded with fiber glass at 30%
 Bushing:
 Polypropylene with load of talcum at 40%

ACCESSORIES

Head without flanges
 Pad
 Wedge (To supplement if necessary)
 Locknut



MODEL SP5



SP 2026

PLOT FOR RAISED FLOORS

MODEL : SP5

EXACT DIMENSIONS

Height Máx : 490 mm Diameter Sup. : 130 mm
Height Min: 400 mm Diameter Inf: 160 mm

TECHNICAL FEATURES

Compressive strength	1500 kg
Thermal stability	-25 / +110 °C
Tile spacing	4 mm
Screw pitch	8 mm
Degree of tilt	0° 1° 2°

COMPOSITION

Polypropylene with load of talcum at 40%
Floating nut:
Polyamide loaded with fiber glass at 30%
Bushing:
Polypropylene with load of talcum at 40%

ACCESSORIES

Head without flanges
Pad
Wedge (To supplement if necessary)
Locknut

MODEL SP6



SP 2031

PLOT FOR RAISED FLOORS

MODEL : SP5

EXACT DIMENSIONS

Height Máx : 580 mm Diameter Sup. : 130 mm
Height Min: 490 mm Diameter Inf: 160 mm

TECHNICAL FEATURES

Compressive strength	1500 kg
Thermal stability	-25 / +110 °C
Tile spacing	4 mm
Screw pitch	8 mm
Degree of tilt	0° 1° 2°

COMPOSITION

Polypropylene with load of talcum at 40%
Floating nut:
Polyamide loaded with fiber glass at 30%
Bushing:
Polypropylene with load of talcum at 40%

ACCESSORIES

Head without flanges
Pad
Wedge (To supplement if necessary)
Locknut

ACCESSORIES



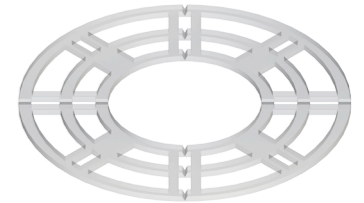
STRIP HEAD SP 2001

Special heads for works with trips on board flooring.
The head has a side support to fix the strips.



HEAD WITHOUT FLANGES SP 2001

Head used as a support for unified elements without gaps or joints between pieces.
Product on request.
Ask for availability.



PAD SP 2001

2.5mm-thick pad made of elastomer material. The pad offers sound insulation and slip resistance. Can be cut into pieces through the existing pre-cuts to chock.



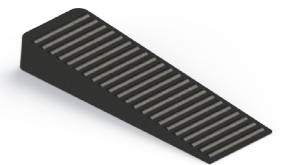
LOCKNUT SP 2001

The locknut blocks the plot to avoid being loosened over time due to vibrations or adverse weather conditions.



SLOPE REGULATOR SP 2003

These wedge-shaped discs allow us to adjust inclination at the base of the plot easily and quickly.
Several regulators can be coupled to obtain the currents wanted and turn them individually to orientate inclination and percentage of unevenness.
With each regulator we can obtain maximum unevenness of 1,5%.
With each regulator the plot is lifted by 3 mm.



WEDGE SP 2048

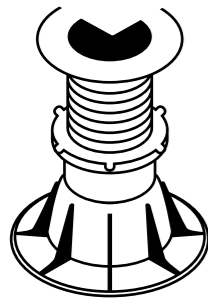
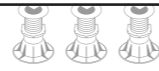
Made of polypropylene, for chocking technical floors.
Measures:
5,5mm high and 45,75mm long.
Point 0,3 mm.
Shoulders on the wedge help to fix the plot.



WRENCH SP2025

rench for tightening the locknut against the plot nut.

PRODUCT SUMMARY

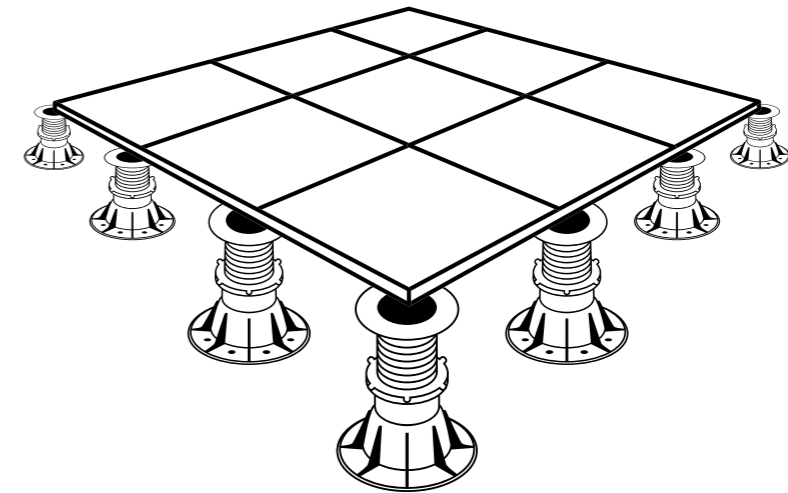
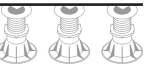


REFERENCE

DESCRIPTION

CODE

APOYO MODEL 10MM	Apoyo fijo	SP2002
APOYO MODEL 15MM	Apoyo fijo	SP2002
SP	Plot for raised floors 35-50 mm	SP2008
SP0	Plot for raised floors 50-75 mm	SP2009
SP1	Plot for raised floors 80-130 mm	SP2012
SP2	Plot for raised floors 130-220 mm	SP2014
SP3	Plot for raised floors 220-310 mm	SP2018
SP4	Plot for raised floors 310-400 mm	SP2022
SP5	Plot for raised floors 400-490 mm	SP2026
SP6	Plot for raised floors 490-580 mm	SP2031
STIP HEAD	Stip head	SP2003
HEAD WITHOUT FLANGES	Head without flanges	SP2001
PAD	Pad	SP2001
LOCKNUT	Locknut	SP2001
SLOPE REGULATOR	Slope regulatos	SP2001
WEDGE	Wedge for raised floor	SP2048
WRENCH	Wrench for tightening the locknut against the plot nut.	SP2025



HOW MANY PLOTS DO YOU NEED?

Formats Floor tiles	Plots Units/m ²
45x45	5,5
30x60	5,5
60x60	3,3
45x90	6,5
75x75	6
90x90	6
60x120	5
60x180	5

Cantidad aproximada.

We recommend that from the size 60x60 to install a plot in the center of the tile.

This additional plot is included in the above list.

EXAMPLE

Surface: 100 m²

Format tile: 45x45 m²

Plots: 100 m² x 5.5 units/m²

You need: **550 plots**



PROPIEDAD INTELECTUAL
INTELLECTUAL PROPERTY



El contenido de este catálogo está protegido por la ley de Propiedad Intelectual, Real Decreto Legislativo 1/1996. Cualquier reproducción del mismo, en parte o en su totalidad, sin autorización expresa de CIFRE CERAMICA, SL. puede ser sancionada conforme el código penal.

CIFRE CERÁMICA SL., se reserva el derecho de modificar y/o suprimir ciertos MODELS, características o presentaciones de los MODELS expuestos en este catálogo, sin previo aviso, por exigencias de producción sin que se contraiga derecho o perjuicio alguno.

Todas nuestras medidas estándar están sujetas a posibles variaciones por circunstancias de la producción.

Los ambientes que se muestran en este catálogo, son sugerencias decorativas de carácter publicitario.

Los colores y/o tonos de las piezas, pueden presentar ligeras diferencias respecto a las piezas reales. Es importante antes de la colocación comprobar que las piezas corresponden a los MODELS y características de calidad, tono y calibre solicitados.

Debiéndose utilizar en la instalación real las instrucciones de colocación editadas por CIFRE CERAMICA.SL.



The content of this catalogue is protected by the Intellectual Property law, Royal Decree Legislative 1/1996. Any reproduction in part or in its entirety, without express authorisation of CIFRE CERAMICA, SL, can be punishable under the penal code.

Due to production constraints, CIFRE CERÁMICA SL. reserves the right, without prejudice, to modify and/or discontinue certain products or features, or vary the appearance of products in this catalogue, without prior notice. Statutory rights are not affected.

All standard measurements are subject to possible variation due to the production process.

The illustrations shown in this catalogue are representative only and for advertising purposes.

The colours and/or shades of items shown may differ slightly from the actual items. Before installation we strongly recommend you ensure all items delivered are as required in terms of product, quality, colour and calibre.

CIFRE CERAMICA.SL fixing instructions must be followed at all times.



Le contenu de ce catalogue est protégé par la loi de propriété intellectuelle, royal décret législatif 1/ 1996. La reproduction d'une part ou de la totalité sans autorisation de CIFRE CERAMICA peut être sanctionné par le code penal.

CIFRE CERÁMICA SL., se réserve le droit de modifier et/ou de supprimer certains modèles, caractéristiques ou présentations des modèles de ce catalogue, sans préavis, pour des raisons de production, sans contracter aucun droit ou dommage.

Toutes les mesures standard peuvent faire l'objet d'éventuelles variations en raison des circonstances de production.

Les ambiances faisant partie de ce catalogue sont des propositions de décoration de type publicitaire.

Les couleurs et/ou les tons des pièces peuvent présenter de légères différences par rapport aux pièces réelles. Il est important de vérifier avant la pose que les pièces correspondent aux modèles et aux caractéristiques concernant la qualité, le ton et le calibre sollicités par le client.

Lors de la pose, les instructions de pose publiées par CIFRE CERAMICA SL. doivent être respectées.



ES07/3348

CIFRE GROUP™

Ctra. Vila-real - Onda, km 10
12200 Onda - Castellón SPAIN
Tel: +34 964 506 969
Fax: + 34 964 521 593
www.cifreceramica.com
e-mail: cifre@cifreceramica.com

VERSIÓN V2 - JULIO 2016