

**cifre**  
cerámica

# Series **Greda**

33,3x33,3 SL / 13"x13"



Ctra. Vila-real Km. 10 - 12200 Onda. Castellón. Apdo. Correos N°350 CP\_12540 - Vila-real. Castellón.  
Tel./Phone +34 964 506 696 - Fax +34 964 521 593. email: cifre@cifreceramica.com www.cifreceramica.com

**33,3x33,3 SI / 13"x13"**

---



**GREDA PERLA MATE 33,3x33,3  
ANTISLIP**  
. | MATT | Neutral Body



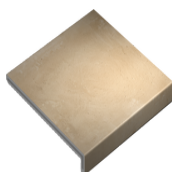
**GREDA BEIGE MATE 33,3x33,3  
ANTISLIP**  
. | MATT | Neutral Body



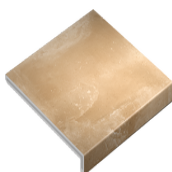
**GREDA COTTO MATE 33,3x33,3  
ANTISLIP**  
. | MATT | Neutral Body

**33,3x33,3 / 13"x13"**

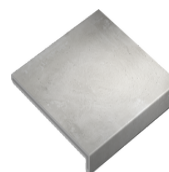
---



**PELDAÑO EXTRUÍDO RECTO GREDA  
BEIGE**  
SP2046 | MATT | Neutral Body



**PELDAÑO EXTRUÍDO RECTO GREDA  
COTTO**  
SP2046 | MATT | Neutral Body



**PELDAÑO EXTRUÍDO RECTO GREDA  
PERLA**  
SP2046 | MATT | Neutral Body

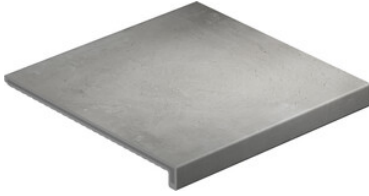
---

**Technical Step**

---

Extruido\_recto

---



**PELDAÑO EXTRUIDO RECTO 33.3X33.3**  
| 33,3x33,3 / 13"x13"



Gallery









