

Serie **Sublime**

60x60 SL / 24"x24"

60x60 SL RC / 24"x24"

30x60 SL RC / 12"x24"



60x60 SI / 24"x24"

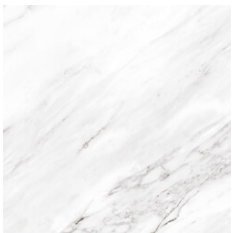


SUBLIME WHITE BRILLO 60x60 SL
G.109 | Glanz | Neutrale Scherben

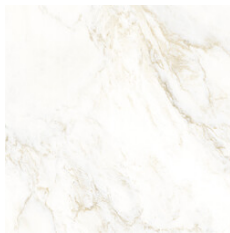


SUBLIME WHITE MATE 60x60
G.66 | MATT | Neutrale Scherben

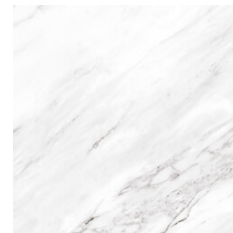
60x60 SI Rc / 24"x24"



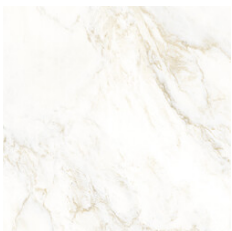
**SUBLIME WHITE ALTO BRILLO
60x60 RC**
G.77 | Glanz | Neutrale Scherben
Begradigt.



**SUBLIME DORADO BRILLO 60x60
SL RC**
G.77 | Glanz | Neutrale Scherben
Begradigt.



SUBLIME WHITE MATE 60x60 RC SL
G.1077 | MATT | Neutrale Scherben
Begradigt.



**SUBLIME DORADO MATE 60x60 SL
RC**
G.1077 | MATT | Neutrale Scherben
Begradigt.

30x60 SI Rc / 12"x24"



SUBLIME DORADO BRILLO 30X60 SL RC
G.78 | Glanz | Neutrale Scherben
Begradigt.



SUBLIME WHITE BRILLO 30x60 SL RC
G.78 | Glanz | Neutrale Scherben
Begradigt.



SUBLIME DORADO MATE 30X60 SL RC
G.1078 | MATT | Neutrale Scherben
Begradigt.



SUBLIME WHITE MATE 30x60 SL RC
G.1078 | MATT | Neutrale Scherben
Begradigt.

30x30 / 12"x12"



SUBLIME MOSAICO WHITE MATE 30x30
SP2037 | MATT |



SUBLIME MOSAICO WHITE BRILLO 30x30
SP2037 | Glanz |



SUBLIME MOSAICO DORADO MATE 30x30
SP2037 | MATT |



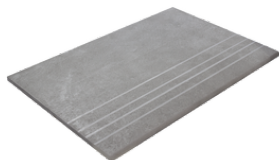
SUBLIME MOSAICO DORADO BRILLO 30x30
SP2037 | Glanz |

Technische Stufe

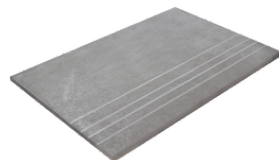
Feinsteinzeug



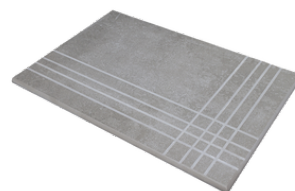
RODAPIÉ 7,5X60
| 30X60 / 12"x24"
| 60X60 / 24"x24"



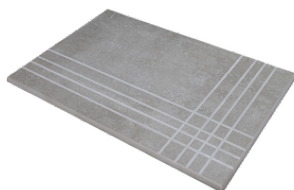
PELDAÑO ROMO 30X60
| 30X60 / 12"x24"



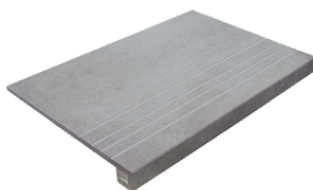
PELDAÑO ROMO 60X60
| 60X60 / 24"x24"



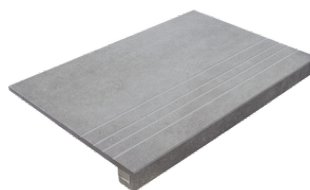
PELDAÑO ANGULO ROMO 30X60
| 30X60 / 12"x24"



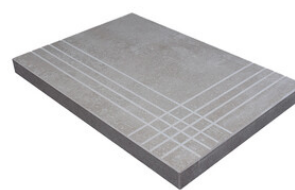
PELDAÑO ANGULO ROMO 60X60
| 60X60 / 24"x24"



PELDAÑO GRADONE RECTO 30X60
| 30X60 / 12"x24"



PELDAÑO GRADONE RECTO 60X60
| 60X60 / 24"x24"



PELDAÑO ANGULO GRADONE RECTO 30X60
| 30X60 / 12"x24"



PELDAÑO ANGULO GRADONE RECTO 60X60
| 60X60 / 24"x24"

Fotogallerie



Die dargestellten Ergebnisse stellen eine grobe Annäherung dar. Dieses Dokument stellt kein Vertragsverhältnis dar. Um Bestellungen aufzugeben oder die Produktverfügbarkeit zu prüfen, wenden Sie sich bitte an das Unternehmen.

