

cifre
cerámica

Serie **Arcata**

30x60 SL / 12"x24"



Ctra. Vila-real Km. 10 - 12200 Onda, Castellón. Apdo. Correos N°350 CP_12540 - Vila-real, Castellón.

☎Tel./Phone +34 964 506 696 - Fax +34 964 521 593. email: cifre@cifreceramica.com www.cifreceramica.com

30x60 SI / 12"x24"



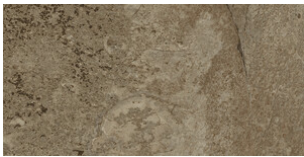
**RELIEVE STONE BEIGE MATE
30x60 SL**
G.64 | MATT | Neutrale Scherben



**RELIEVE STONE TERRA MATE
30x60 SL**
G.64 | MATT | Neutrale Scherben



**STONE BEIGE MATE 30x60 SL
ANTISLIP**
G.64 | MATT | Neutrale Scherben

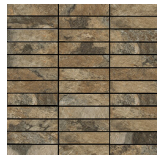


STONE TERRA 30x60 SL ANTISLIP
G.64 | MATT | Neutrale Scherben

30x30 / 12"x12"



**STONE TESELA BEIGE MATE 30x30
ANTISLIP**
SP2037 | MATT |



**STONE TESELA TERRA MATE 30x30
ANTISLIP**
SP2037 | MATT |



**STONE MOSAICO TERRA MATE
30x30 ANTISLIP**
SP2037 | MATT |



**STONE MOSAICO BEIGE 30x30
ANTISLIP**
SP2037 | MATT |



**STONE MALLA BEIGE 30x30
ANTISLIP**
SP2037 | MATT |



**STONE MALLA TERRA MATE 30x30
ANTISLIP**
SP2037 | MATT |

22x44 / 9"x18"



STONE MURETTO TERRA MATE 22X44
SP2039 | MATT |



**STONE MURETTO BEIGE MATE
22X44 ANTISLIP**
SP2039 | MATT |

Technische Stufe

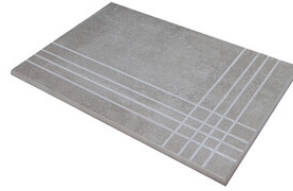
Feinsteinzeug



RODAPIÉ 7,5X60
| 30X60 / 12"x24"



PELDAÑO ROMO 30X60
| 30X60 / 12"x24"



PELDAÑO ANGULO ROMO 30X60
| 30X60 / 12"x24"



PELDAÑO GRADONE RECTO 30X60
| 30X60 / 12"x24"



PELDAÑO ANGULO GRADONE RECTO 30X60
| 30X60 / 12"x24"

Fotogallerie



